



# College of Southern Idaho Head Start/Early Head Start



2017 - 2018

# Annual Report



**College of Southern Idaho  
Head Start/Early Head Start  
998 Washington Street North  
Twin Falls, Idaho 83301  
208-736-0741**

## **College of Southern Idaho Mission Statement**

The College of Southern Idaho, a comprehensive community college, provides quality educational, social, cultural, economic, and workforce development opportunities that meet the diverse needs of the communities it serves. CSI prepares students to lead enriched, productive, and responsible lives in a global society.

## **CSI Head Start/ Early Head Start Mission Statement**

The College of Southern Idaho Head Start/Early Head Start is committed to providing quality, comprehensive services in order to ensure school readiness and healthy development while strengthening families, within their communities, by becoming life-long learners.

## **Head Start/Early Head Start Program Goals**

### **GOAL #1**

Demonstrate continued commitment to delivering comprehensive early childhood education and family services.

### **GOAL #2**

Support employee learning, growth, wellness and success.

### **GOAL #3**

Continuous improvement of program systems that ensures compliance with program quality standards.



## Head Start Enrollment 2017-2018

Since 1965, Head Start has been preparing children for Kindergarten and helping them develop the skills to become life-long learners. The program serves children in low-income families and children with diagnosed disabilities in the areas of school readiness, nutrition, medical, social and emotional services through class-time and home visits. The College of Southern Idaho Head Start program serves 484 children in nine counties from September to May.

County	Income Eligible	Federally Funded	TANF Funded	Income Eligible Not Served	Total Children Served
Blaine	241	0		241	0
Cassia	516	100		390	126
Gooding	316	33		274	42
Jerome	588	76		497	91
Lincoln	85	20		65	20
Minidoka	419	52		359	60
Power	185	28	12	137	48
Twin Falls	1585	148		1405	180
<b>TOTALS</b>	<b>3935</b>	<b>457</b>	<b>12</b>	<b>3368</b>	<b>567</b>

The Head Start Program served 14% of the income eligible three and four year old children.

**Head Start/Early Head Start maintained 100% enrollment with an 84% Monthly Average Attendance Rate**

**73 children received Special Education or Early Intervention Services**

## Early Head Start Enrollment 2017-2018

Early Head Start has served low-income infants, toddlers, pregnant women and their families since 1994. College of Southern Idaho Early Head Start program provides families with the opportunity to enhance their infant or toddler's physical development, problem solving abilities, social and emotional skills. The program helps pregnant women obtain prenatal and post-partum care, as well as, families with infants and/or toddlers access to comprehensive health services. CSI Early Head Start provides services for 92 infants, toddlers and pregnant women year-round in Twin Falls, Rupert and Jerome.

County	Income Eligible	Federally Funded	TANF Funded	Income Eligible Not Served	Total Children Served
Jerome	832	27	0	795	37
Minidoka	594	27	0	547	47
Twin Falls	2393	38	0	2331	62
<b>TOTALS</b>	<b>3819</b>	<b>92</b>	<b>0</b>	<b>3673</b>	<b>146</b>

The Early Head Start Program served 4% of the income eligible infants, toddlers, and pre-natal mothers.

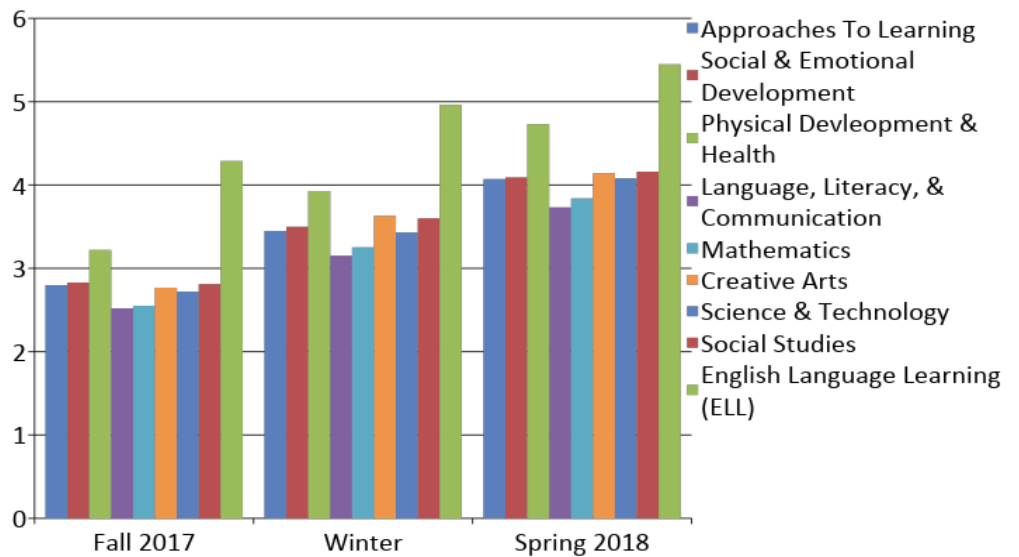
# Children's Services

The College of Southern Idaho Head Start/ Early Head Start program utilizes the High Scope Curriculum, Child Observation Record (COR) and the Infant/ Toddler Child Observation Record to measure developmental milestones, kindergarten preparedness and overall school readiness for children ages 0-5 in skill development.

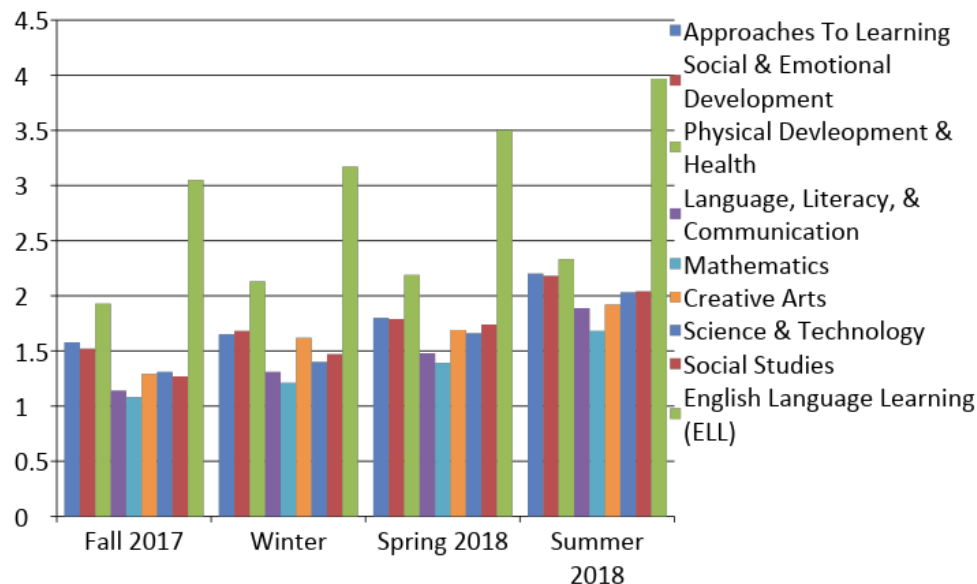
The Child Observation Record is gathered 3 times during the program year for Head Start and 4 times for Early Head Start. Staff and parents take anecdotes on the children. The anecdotes are scored from a level 0 to a level 7, with 0 being a lower skill level and increasing to more advanced skill levels.

There are 36 items on the Pre-School COR divided into 9 domains

## Head Start COR Report



There are 28 items on the Infant/Toddler COR divided into 5 domains



## Early Head Start COR Report

# Health Services

The philosophy of CSI Head Start/ Early Head Start health services is to prevent health problems whenever possible by carefully addressing the needs of enrolled children. Collaborative partnerships are the key to the success of this approach. When conditions or illnesses are found, they are addressed quickly with the help of competent health care partners in an effort to improve the health of the child and to prevent future problems.

**Some services that the CSI Head Start/ Early Head Start program provides include:**

- Assisting families in finding a medical home and dental home.
- Locating sources of funding for health services, such as Medicaid or other community resources.
- Tracking health services such as well-child exams, dental and immunizations.
- Providing parents with information about well-child exams, screenings, trainings and information on child health development.

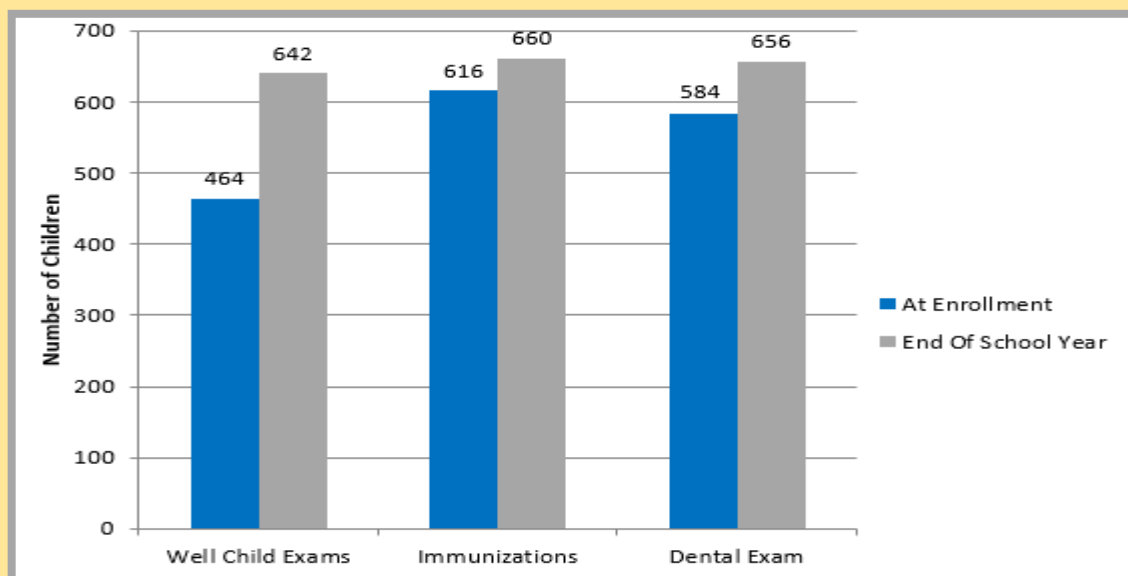
## Well -Child Exams

In addition to ensuring that Head Start families find a medical home for their children's care, the Head Start Program Performance Standards require a determination by a health care professional that a child is up-to-date on a schedule of well-child care. Since health care in Head Start requires family involvement, Head Start staff members are expected to emphasize to parents, the importance not only of finding a dental and health care provider, but also of scheduling future preventative dental and health care appointments. Well-child care includes scheduled age-appropriate preventative and primary health care including medical, dental and mental health care. Head Start follows the Early and Periodic Screening, Diagnostic and Treatment (EPSDT) program of the Idaho State Medicaid agency.

## Medical Home / Dental Home

Head Start staff members make an effort to coordinate health services with families. They strive to ensure that each child has a source of continuous, accessible and coordinated care that serves as a medical home and a dental home.

**2017-2018 School Year: 567 Head Start, 166 Early Head Start - Total Children Served 733**



# Family Services and Parent Involvement

## Activities

- Serving on interview panels
- Self-Assessment Team
- Pinwheels for Prevention
- Elected Positions
- Classroom/Center Volunteer
- Parent Meetings
- Health Fair
- Adopt-A-Highway
- Literacy
- Soup Kitchen
- Community Parades/ County Fairs
- Male Involvement



## Parent Trainings

- CPR/ First Aid
- Shaken Baby Syndrome
- Nutrition
- School Readiness
- Car Seat Safety
- Color Me Healthy
- Budgeting
- High Scope
- Bus Monitoring
- Gardening
- Couponing
- Child Abuse
- Stress Management
- Positive Guidance
- Problem Solving

## Parent Education

- GED/ESL
- College Courses
- Library Cards
- CDL
- Sanitation Courses



Languages Spoken by our Families:

- ◆ English
- ◆ Spanish
- ◆ Russian
- ◆ Turkish
- ◆ Chinese
- ◆ Arabic
- ◆ Burmese
- ◆ Nepali
- ◆ American Sign

Head Start/Early Head Start served **688** families, of those:

- 31** Parents had an advanced degree or baccalaureate degree
- 218** Parents had an associate degree, vocational certificate or some college course work completed
- 255** Parents had a high school diploma or GED
- 41** Parents were attending job training or school



College of Southern Idaho Head Start/Early Head Start  
Statement of Expenses  
January 1, 2017—December 31, 2017

Expenditures	Projected Budget Head Start/ Early Head Start	Head Start Federal Grant	Early Head Start Federal Grant	Community Health Improvement	TANF 7/1/17- 06/31/18	CACFP
Personnel	\$ 3,109,395.00	\$ 2,552,810.00	\$ 564,478.00		\$ 61,798.22	
Fringe Benefits	\$ 1,889,996.00	\$ 1,502,348.00	\$ 325,412.00		\$ 35,603.64	
Travel	\$ 61,017.00	\$ 32,132.00	\$ 26,995.00		\$ 269.07	
Equipment	\$ 335,067.00	\$ 381,941.00	\$ 2,395.00		\$ 349.98	
Supplies	\$ 172,591.00	\$ 160,799.00	\$ 45,245.00		\$ 5,300.79	
Food	\$ 2,006.00	\$ 11,741.00	\$ 914.00			\$ 200,928.00
Contractual	\$ 57,289.00	\$ 7,297.00	\$ 44,177.00	\$ 14,115.00	\$ 252.37	
Facilities/Construction	\$ -					
Other	\$ 1,025,164.00	\$ 817,559.00	\$ 126,388.00		\$ 18,445.60	
Admin Costs	\$ 444,270.00	\$ 325,123.00	\$ 80,090.00		\$ 2,492.33	
<b>Total Expend.</b>	<b>\$ 7,096,795.00</b>	<b>\$ 5,791,750.00</b>	<b>\$ 1,216,094.00</b>	<b>\$ 14,115.00</b>	<b>\$ 124,512.00</b>	<b>\$ 200,928.00</b>

College of Southern Idaho Head Start/Early Head Start provides quality, comprehensive services to nine Counties in Southern Idaho. This is made possible by a yearly grant provided by the Federal Government, State funds through Temporary Assistance for Needy Families (TANF), CACFP meal reimbursement, and local grants, such as; Community Health Improvement, United Way and Twin Falls Health Initiative grants. Head Start Families and Community Volunteers generated the following non-federal match to federal grant dollars through volunteer time and donations: **1,876,791** which represents over **20%** of the total federal funding.

## Federal Review and Audit Results

The College of Southern Idaho Head Start/Early Head Start has not received a Federal Review since October 2013.

No instances of noncompliance or other matters identified during the Audit of Financial Statements for CSI dated October 2017.

This material was generate with funds provided by  
Health and Human Service Grant

#10CH010422